

Rocky Neck Historic Art Trail

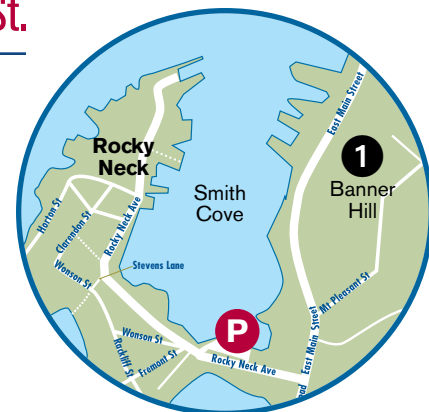
Gloucester, Massachusetts

Trail Site **1** Above 186 to 220 East Main St.

Banner Hill

The high ridge, or bluff, rising above the Smith Cove inlet on the east side of Gloucester Harbor, is called “Banner Hill.” So named after the Wonson brothers raised a flag there at the outbreak of the Civil War, it commands a panoramic scene, with the jewel of Rocky Neck’s wharves and houses sitting in the center of the harbor, framed by the buildings and steeples of the central city beyond. During the second half of the 19th Century and the first decades of the 20th, many of America’s most important artists journeyed to Gloucester to experience the amazing coastal scenery in this fishing port composed of high hills overlooking a protected and deep harbor. Banner Hill afforded perhaps the most dramatic of these views.

Attracted to Gloucester by its reputation for authentic New England beauty, as conveyed in the paintings of famed 19th century artists Fitz H. Lane and Winslow Homer, the preeminent landscape painters of the American Impressionist movement in the 1890s, including Childe Hassam, Willard Metcalf, Frank Duveneck, and John Twachtman, created masterpieces from the perspective of Banner Hill. They were followed in the 20th century by Max Kuehne, George L. Noyes, Leon Kroll, Theresa Bernstein, William Meyerowitz, and Emile Gruppé.

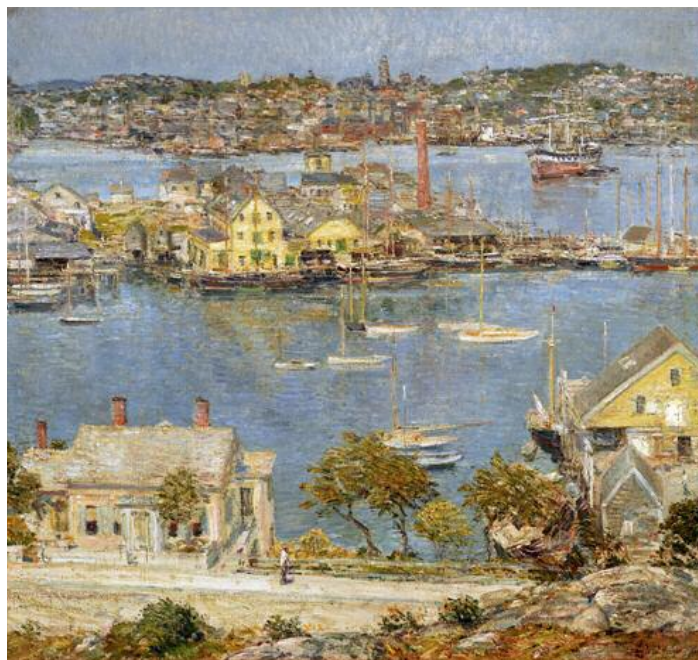
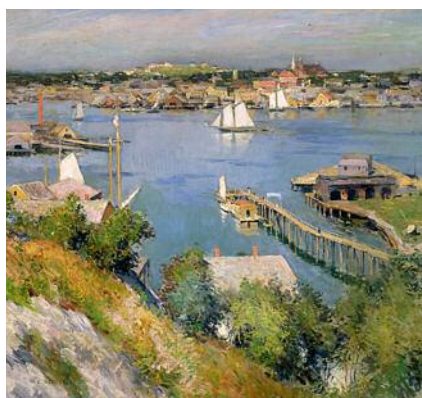


DIRECTIONS:

From the end of Rte. 128 (second traffic light) go straight up over hill. Follow East Main Street about 5/8 mile just past East Gloucester Square. Banner Hill rises up along the left side of the road for a few hundred yards along Smith Cove, above the section of 186 to 220 East Main Street, just across from Beacon Marine boat yard and extending southwest, topped by several stately houses.



Above: Current site photo; the view from Banner Hill.



Above: *Gloucester Harbor*, 1899, by Childe Hassam, oil on canvas, 25 x 26 ½ in. Norton Museum of American Art, W. Palm Beach, FL.

Left: *Gloucester Harbor*, 1895, by Willard L. Metcalf, oil on canvas, 26¼ x 29¼ in. Mead Art Museum, Amherst College, MA.

